

grip 工業機器人周邊部件

GRIPPER



氣囊內孔夾持器&氣壓平行夾爪

Gi
GiS
GP
GZ

氣壓
內孔夾持
&
氣壓夾爪

MGW
SHW
SWA
SWS

手動換模
系列

MEK
SEK
DDF

氣壓
旋轉接頭
&
氣/電
快速連接器



Gi 氣囊內孔夾持器 Internal Gripper

- 內部夾具浸入鑽孔中，通過氣壓膨脹矽膠膜來擴大產生夾持力，保持在孔內壁上。
- 當氣壓關閉時，矽膠膜由於彈性行為而縮回到夾具中
- 規格：17種，最小安裝尺寸，從內徑4mm~20mm
- 彈性矽膠膜使用壽命長
- 可快速更換隔膜
- 夾持工件重量: 0.1~6kg
- 2D&3D提供

03~19頁



GiS 氣動內孔夾持器 Internal Gripper Abatement

- Gi優化夾持區設計，內部夾具，通過氣壓膨脹矽膠膜來擴大產生夾持力，保持在孔內壁上。當氣壓關閉時，矽膠膜由於彈性行為而縮回到夾具中
- 規格：16種，最小安裝尺寸，從內徑5mm~20mm
- 彈性矽膠膜使用壽命長
- 可快速更換隔膜
- 夾持工件重量: 0.4~6kg
- 2D&3D提供

20~35頁



GP 氣壓平行夾爪 Parallel gripper

- 規格：5種，每一規格有2種行程
- 夾持力：280N~4900N
- 高壽命
- 2D&3D提供
- 符合DIN EN ISO 9409-12標準的機械接口

36~41頁



GZ 氣壓Y行夾爪 Pincer gripper

- 規格：10種
- 開啟角度60°，可調
- 堅固耐用的機械結構，延長使用壽命
- 2D&3D提供
- 符合DIN EN ISO 9409-12標準的機械接口

42~47頁

手動換模器 Quick-Change-System

MGW 手動氣壓夾爪
快速換模器



SHW 推力槓桿
換模器



SWA
快速換模連接器



SWS
快速換模連接器



手動換模器 Quick-Change-System

MEK 氣/電
快速連接器



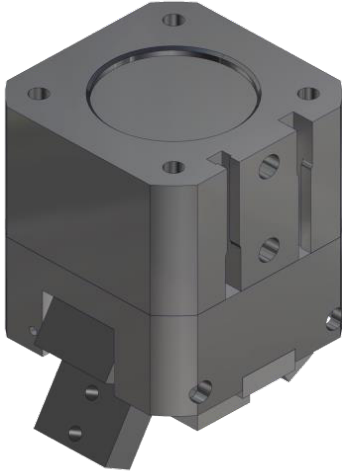
SEK 氣/電
快速連接器



DDF 空氣4通道
旋轉接頭



◎ 目錄上所有的功能尺寸及公差僅供參考，本公司保有變更之權力並不事先通知。◎ 請有任何疑問與特殊需求請洽詢本公司。



Operating mode:

The double-acting cylinder is operated by pneum. compressed-air and actuates the power unit. An eccentric mechanism ensures a long service life and a constant gripping moment. In contrast to the parallel gripper, the gripping safety device is only capable of being closed -GS-.

Advantages:

High service life by robust mechanics

Constant torque over the entire opening and closing range of the fingers

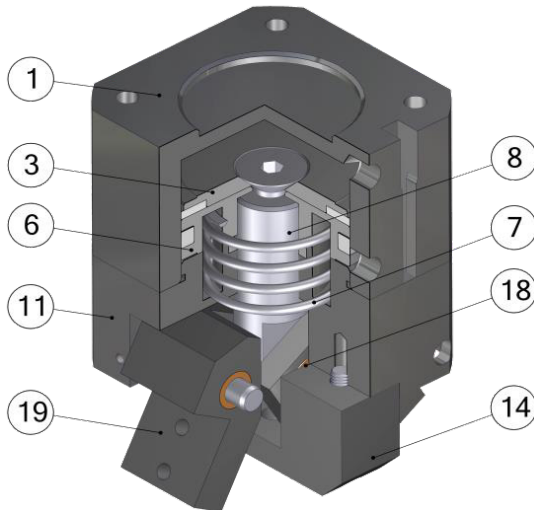
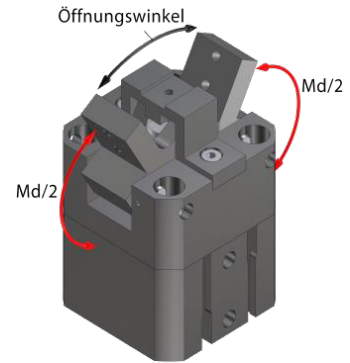
Mechanical interface according to DIN EN ISO 9409-1

Low dead weight

optional gripping force safety device "shutting"

Piston position monitoring using inductive proximity switch ZG-RSGU01 / 300-M8

| Technical specifications | | GZ063 |
|--------------------------|---------------|-----------------|
| Torque at 6 bar | Md [Nm] | 11,4 |
| Md factor | fg [Nm/bar] | 1,9 |
| Included angle | | 60° |
| Gripper weight | mg [kg] | 0,4 |
| Air consumption | V [ccm] | 10 |
| Air supply | Pmax = 10 bar | M5 |
| Mounting flange | ISO | 4 x M5 - TK ø50 |



| Pos. | Description |
|------|----------------------------|
| 1 | Cylinder ISO |
| 2 | Counter sunk screw, zinced |
| 3 | Piston cover |
| 4 | Magnetic ring |
| 5 | Sealing ring 1 |
| 6 | Piston |
| 7 | Pressure spring |
| 8 | Power unit |
| 9 | Sealing ring 2 |
| 10 | O- Ring |
| 11 | Housing |
| 12 | Cylindrical pin eccentric |
| 13 | Cylinder screw housing |
| 14 | Stop |
| 15 | Cylinder screw stop |
| 16 | Setscrew power unit |
| 17 | Sinter bronze connection |
| 18 | Eccentric |
| 19 | Finger |
| 20 | Cylindrical pin finger |

Pincer Gripper Ø63...

| | |
|-------------|--|
| G-GZ063-IGS | ISO-flange gripping force safety device shutting |
| G-GZ063-IO | ISO-flange without gripping force safety device |

Accessories GZ

| | |
|------------------|---|
| ZG-RSGU-01 | Signal transmitter with LED |
| ZG-RSGU01-300-M8 | Signal transmitter with LED, with M8 plug |

Spare Parts GG

| | |
|-------------|---------------------------------|
| EG-GG063-DS | Gasket kit for gripper size 063 |
|-------------|---------------------------------|

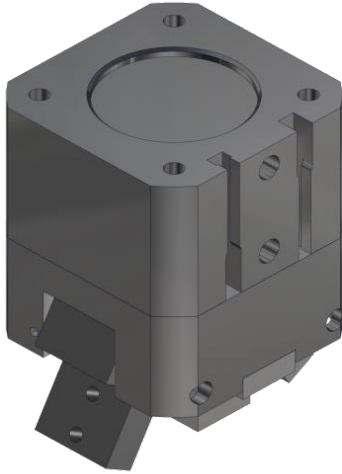
GZ063 氣壓Y行夾爪

Pincer gripper



GZ
系列
夾爪

GZ050
GZ063
GZ080
GZ100
GZ125
RSGU



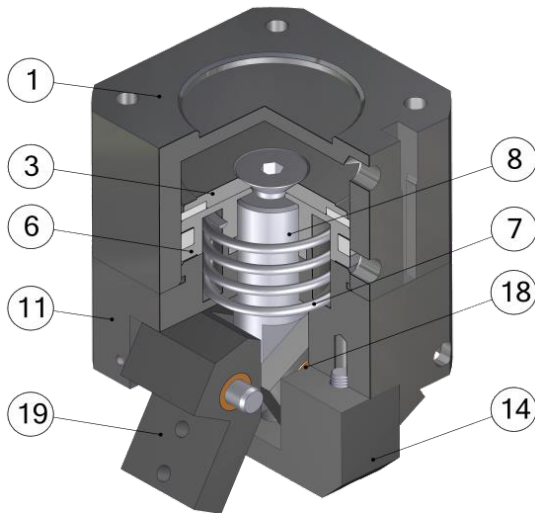
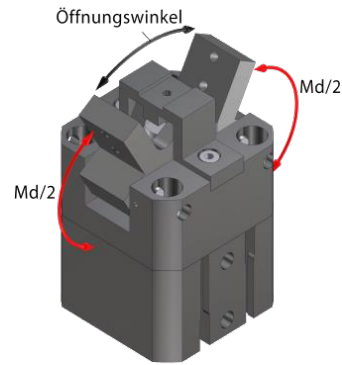
Operating mode:

The double-acting cylinder is operated by pneum. compressed-air and actuates the power unit. An eccentric mechanism ensures a long service life and a constant gripping moment. In contrast to the parallel gripper, the gripping safety device is only capable of being closed -GS-.

Advantages:

- High service life by robust mechanics
- Constant torque over the entire opening and closing range of the fingers
- Mechanical interface according to DIN EN ISO 9409-1
- Low dead weight
- optional gripping force safety device "shutting"
- Piston position monitoring using inductive proximity switch ZG-RSGU01 / 300-M8

| Technical specifications | | GZ063 |
|--------------------------|---------------|-----------------|
| Torque at 6 bar | Md [Nm] | 11,4 |
| Md factor | fg [Nm/bar] | 1,9 |
| Included angle | | 60° |
| Gripper weight | mg [kg] | 0,4 |
| Air consumption | V [ccm] | 10 |
| Air supply | Pmax = 10 bar | M5 |
| Mounting flange | ISO | 4 x M5 - TK ø50 |



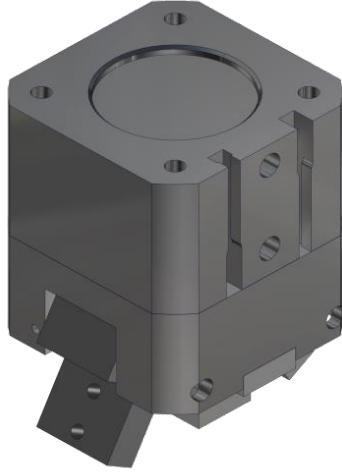
| Pos. | Description |
|------|-----------------------------|
| 1 | Cylinder ISO |
| 2 | Counter sunk screw, zincked |
| 3 | Piston cover |
| 4 | Magnetic ring |
| 5 | Sealing ring 1 |
| 6 | Piston |
| 7 | Pressure spring |
| 8 | Power unit |
| 9 | Sealing ring 2 |
| 10 | O- Ring |
| 11 | Housing |
| 12 | Cylindrical pin eccentric |
| 13 | Cylinder screw housing |
| 14 | Stop |
| 15 | Cylinder screw stop |
| 16 | Setscrew power unit |
| 17 | Sinter bronze connection |
| 18 | Eccentric |
| 19 | Finger |
| 20 | Cylindrical pin finger |

| Pincer Gripper Ø63... | |
|-----------------------|--|
| G-GZ063-IGS | ISO-flange gripping force safety device shutting |
| G-GZ063-IO | ISO-flange without gripping force safety device |
| Accessories GZ | |
| ZG-RSGU-01 | Signal transmitter with LED |
| ZG-RSGU01-300-M8 | Signal transmitter with LED, with M8 plug |
| Spare Parts GG | |
| EG-GG063-DS | Gasket kit for gripper size 063 |

版權所有 ● 丹耀貿易有限公司

Danyao Trading Co., Ltd.

© 目錄上所有的功能尺寸及公差僅供參考，本公司保有變更之權力並不事先通知。 ● 請有任何疑問與洽詢請來電洽詢本公司。



Operating mode:

The double-acting cylinder is operated by pneum. compressed-air and actuates the power unit. An eccentric mechanism ensures a long service life and a constant gripping moment. In contrast to the parallel gripper, the gripping safety device is only capable of being closed -GS-.

Advantages:

High service life by robust mechanics

Constant torque over the entire opening and closing range of the fingers

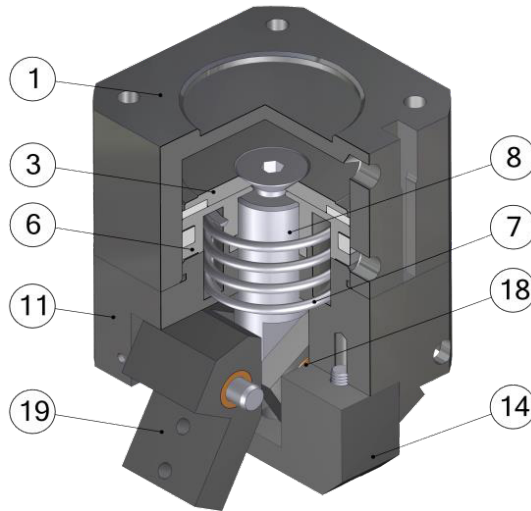
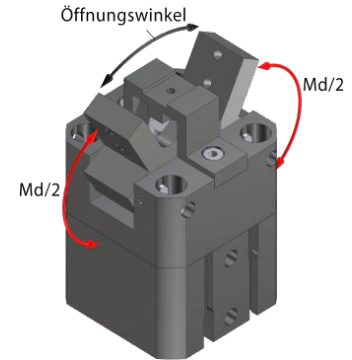
Mechanical interface according to DIN EN ISO 9409-1

Low dead weight

optional gripping force safety device "shutting"

Piston position monitoring using inductive proximity switch ZG-RSGU01 / 300-M8

| Technical specifications | | GZ080 |
|--------------------------|---------------|-----------------|
| Torque at 6 bar | Md [Nm] | 22 |
| Md factor | fg [Nm/bar] | 3,6 |
| Included angle | | 60° |
| Gripper weight | mg [kg] | 0,9 |
| Air consumption | V [ccm] | 19,6 |
| Air supply | Pmax = 10 bar | M5 |
| Mounting flange | ISO | 4 x M6 - TK ø63 |



| Pos. | Description |
|------|----------------------------|
| 1 | Cylinder ISO |
| 2 | Counter sunk screw, zinced |
| 3 | Piston cover |
| 4 | Magnetic ring |
| 5 | Sealing ring 1 |
| 6 | Piston |
| 7 | Pressure spring |
| 8 | Power unit |
| 9 | Sealing ring 2 |
| 10 | O- Ring |
| 11 | Housing |
| 12 | Cylindrical pin eccentric |
| 13 | Cylinder screw housing |
| 14 | Stop |
| 15 | Cylinder screw stop |
| 16 | Setscrew power unit |
| 17 | Sinter bronze connection |
| 18 | Eccentric |
| 19 | Finger |
| 20 | Cylindrical pin finger |

Pincer Gripper Ø80...

| | |
|-------------|---|
| G-GZ080-IGS | ISO-flange griping force safety device shutting |
| G-GZ080-IO | ISO-flange without griping force safety device |

Accessories GZ

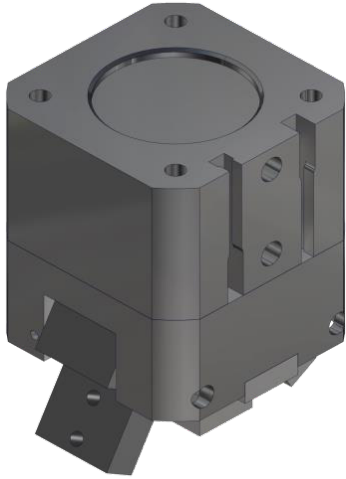
| | |
|------------------|---|
| ZG-RSGU-01 | Signal transmitter with LED |
| ZG-RSGU01-300-M8 | Signal transmitter with LED, with M8 plug |

Spare Parts GG

| | |
|-------------|---------------------------------|
| EG-GG080-DS | Gasket kit for gripper size 080 |
|-------------|---------------------------------|

GZ100 氣壓Y行夾爪

Pincer gripper



Operating mode:

The double-acting cylinder is operated by pneum. compressed-air and actuates the power unit. An eccentric mechanism ensures a long service life and a constant gripping moment. In contrast to the parallel gripper, the gripping safety device is only capable of being closed -GS-.

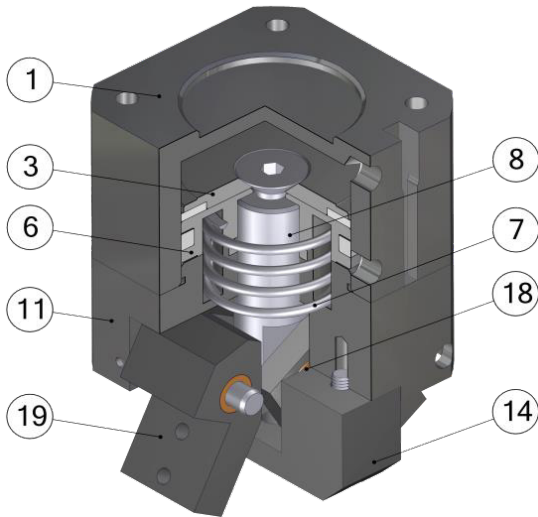
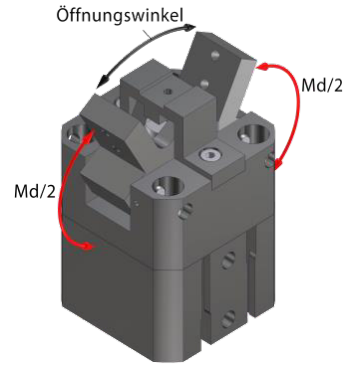
Advantages:

- High service life by robust mechanics
- Constant torque over the entire opening and closing range of the fingers
- Mechanical interface according to DIN EN ISO 9409-1
- Low dead weight
- optional gripping force safety device "shutting"
- Piston position monitoring using inductive proximity switch ZG-RSGU01 / 300-M8

GZ 系列 夾爪

- GZ050
- GZ063
- GZ080
- GZ100**
- GZ125
- RSGU

| Technical specifications | | GZ100 |
|--------------------------|---------------|-----------------|
| Torque at 6 bar | Md [Nm] | 47,6 |
| Md factor | fg [Nm/bar] | 7,9 |
| Included angle | | 60° |
| Gripper weight | mg [kg] | 1,9 |
| Air consumption | V [ccm] | 38,6 |
| Air supply | Pmax = 10 bar | G 1/8 |
| Mounting flange | ISO | 4 x M8 - TK ø80 |



| Pos. | Description |
|------|-----------------------------|
| 1 | Cylinder ISO |
| 2 | Counter sunk screw, zincked |
| 3 | Piston cover |
| 4 | Magnetic ring |
| 5 | Sealing ring 1 |
| 6 | Piston |
| 7 | Pressure spring |
| 8 | Power unit |
| 9 | Sealing ring 2 |
| 10 | O- Ring |
| 11 | Housing |
| 12 | Cylindrical pin eccentric |
| 13 | Cylinder screw housing |
| 14 | Stop |
| 15 | Cylinder screw stop |
| 16 | Setscrew power unit |
| 17 | Sinter bronze connection |
| 18 | Eccentric |
| 19 | Finger |
| 20 | Cylindrical pin finger |

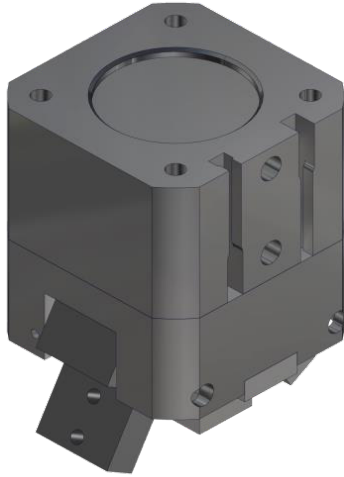
Pincer Gripper Ø100...

| G-GZ100-IGS | ISO-flange gripping force safety device shutting |
|------------------|--|
| G-GZ100-IO | ISO-flange without gripping force safety device |
| Accessories GZ | |
| ZG-RSGU-01 | Signal transmitter with LED |
| ZG-RSGU01-300-M8 | Signal transmitter with LED, with M8 plug |
| Spare Parts GG | |
| EG-GG100-DS | Gasket kit for gripper size 100 |

版權所有 · 丹耀貿易有限公司

Danyao Trading Co., Ltd.

© 目錄上所有的功能尺寸及公差僅供參考，本公司保有變更之權力並不事先通知。 ● 請有任何疑問與洽詢請逕洽本公司。



Operating mode:

The double-acting cylinder is operated by pneum. compressed-air and actuates the power unit. An eccentric mechanism ensures a long service life and a constant gripping moment. In contrast to the parallel gripper, the gripping safety device is only capable of being closed -GS-.

Advantages:

High service life by robust mechanics

Constant torque over the entire opening and closing range of the fingers

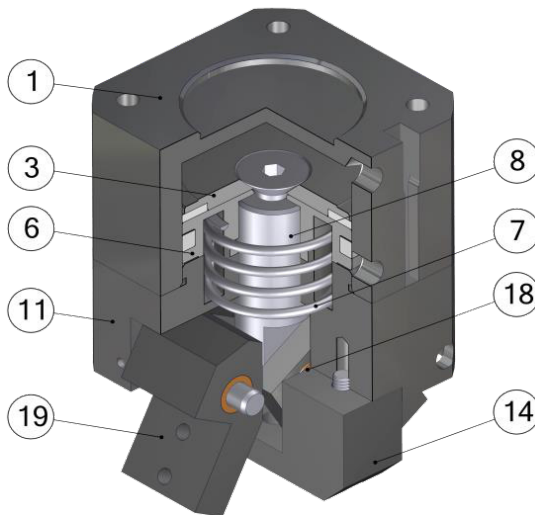
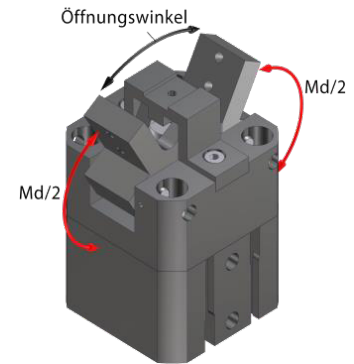
Mechanical interface according to DIN EN ISO 9409-1

Low dead weight

optional gripping force safety device "shutting"

Piston position monitoring using inductive proximity switch ZG-RSGU01 / 300-M8

| Technical specifications | | GZ125 |
|--------------------------|---------------|------------------|
| Torque at 6 bar | Md [Nm] | 87,5 |
| Md factor | fg [Nm/bar] | 14,6 |
| Included angle | | 60° |
| Gripper weight | mg [kg] | 3 |
| Air consumption | V [ccm] | 70,4 |
| Air supply | Pmax = 10 bar | G 1/8 |
| Mounting flange | ISO | 4 x M8 - TK ø100 |



| Pos. | Description |
|------|----------------------------|
| 1 | Cylinder ISO |
| 2 | Counter sunk screw, zinced |
| 3 | Piston cover |
| 4 | Magnetic ring |
| 5 | Sealing ring 1 |
| 6 | Piston |
| 7 | Pressure spring |
| 8 | Power unit |
| 9 | Sealing ring 2 |
| 10 | O- Ring |
| 11 | Housing |
| 12 | Cylindrical pin eccentric |
| 13 | Cylinder screw housing |
| 14 | Stop |
| 15 | Cylinder screw stop |
| 16 | Setscrew power unit |
| 17 | Sinter bronze connection |
| 18 | Eccentric |
| 19 | Finger |
| 20 | Cylindrical pin finger |

Pincer Gripper Ø125...

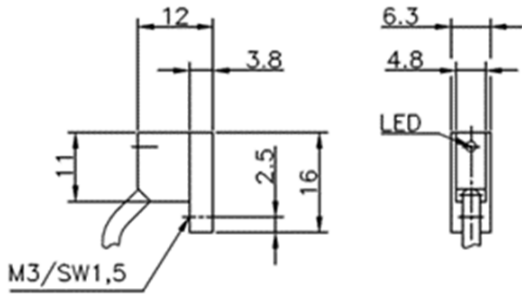
| | |
|-------------|--|
| G-GZ125-IGS | ISO-flange gripping force safety device shutting |
| G-GZ125-IO | ISO-flange without gripping force safety device |

Accessories GZ

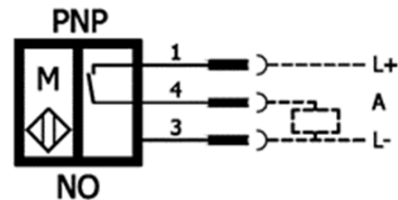
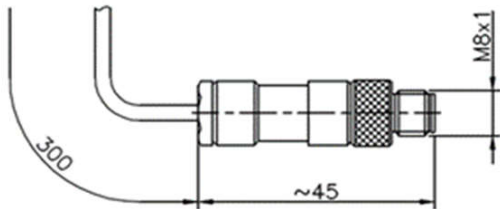
| | |
|------------------|---|
| ZG-RSGU-01 | Signal transmitter with LED |
| ZG-RSGU01-300-M8 | Signal transmitter with LED, with M8 plug |

Spare Parts GG

| | |
|-------------|---------------------------------|
| EG-GG125-DS | Gasket kit for gripper size 125 |
|-------------|---------------------------------|

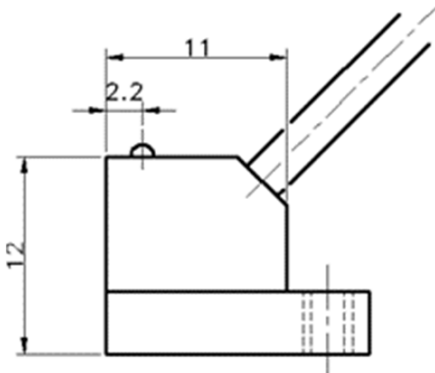


| Technical specifications | RSGU01-300-M8 |
|-----------------------------------|--------------------------------------|
| DC 3-Conductor | 16x12x6,3 mm |
| Switching output | PNP-closing contact |
| Operational voltage UB | 10 - 30V DC |
| rated operational current Ie | max. 400 Hz |
| Voltage drop Du | ≤3V (bei I _{max} = 400mA) |
| Temperature range | - 25° C ... +80° C |
| Short circuit withstands | integrated |
| inverse-polarity protection | integrated |
| IP class according to DIN 60 5029 | IP67 |
| switching status display | LED |
| Pin M8 | 0,3m PVC lead: 3x0,04mm ² |
| Housing material | synthetic material |

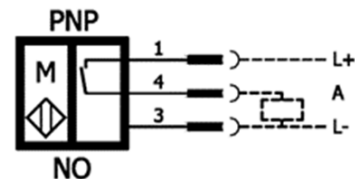
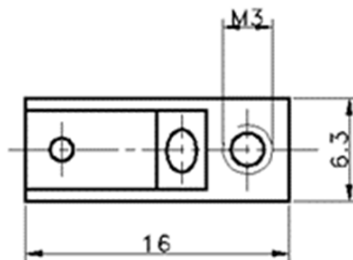
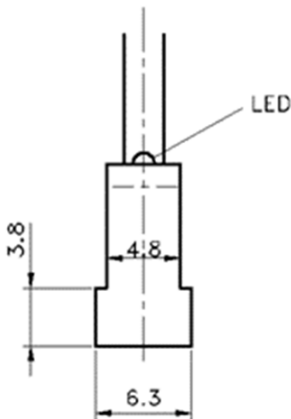


Elektronic magnetic switch

ZG-RSGU01-300-M8 for G-GZ..., signal transmitter with LED, with M8 plug



| Technical specifications | RSGU01 |
|-----------------------------------|-------------------------------------|
| DC 3-Conductor | 16x12x6,3 mm |
| Switching output | PNP-closing contact |
| Operational voltage UB | 10 - 30V DC |
| rated operational current Ie | max. 400 Hz |
| Voltage drop Du | ≤3V (bei I _{max} = 400mA) |
| Temperature range | - 25° C ... +80° C |
| Short circuit withstands | integrated |
| inverse-polarity protection | integrated |
| IP class according to DIN 60 5029 | IP67 |
| switching status display | LED |
| Connection with open | 2 m PVC lead: 3x0,04mm ² |
| Housing material | synthetic material |



Elektronic magnetic switch

ZG-RSGU01 magnetic proximity switch